



- Long Life
- Easy Installation
- Optimal isolation against vibrations
- Very Large Loads
- Maintenance-free operation

Pneumatic spring bellows from CVP is used as formidable vibration damper for heavy loads and mechanical lifting for vibrating tables for roller conveyors.



Pneumatic Spring Bellows

The pneumatic spring bellows are made of reinforced elastomer multilayers.

A lateral displacement of up to max. 10 mm is permissible.

The steel end plates are securely joined to the bellow walls by means of beading and are pressure-tight.

No moving interior components, no sliding surfaces, therefore low friction.

Up to 30° inclination of the end plates is possible, provided H min. and H max. are observed.

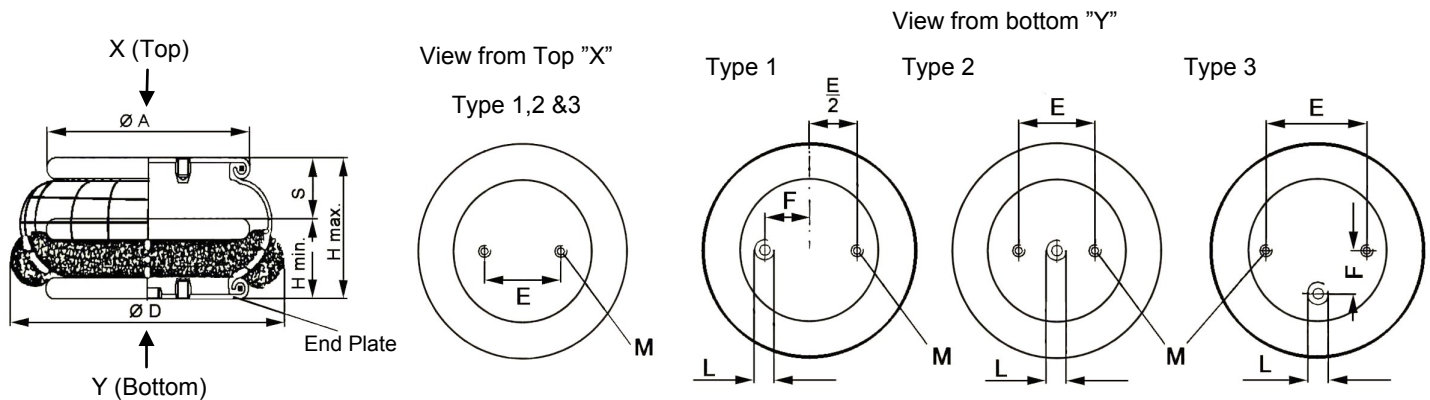
The pneumatic spring bellows are maintenance-free even under rough environmental conditions.

Temperature range: -40°C to 70°C (temperatures >50°C decrease life time)

Recommended operating pressure: 4 bar

Nominal pressure: max. 6 bar

Operating medium: oil-free compressed air or nitrogen



Recommended tightening torques: M8, G1/8 and G1/4 25 Nm, G3/4 50 Nm.

	H min. [mm]	H max. [mm]	S max. [mm]	Support Load*		ØD [mm]	End Plate**					
				[kN]	[mm]		[mm]					
				4 bar	H		Type	ØA	E	F	L	M
40-1	60	100	40	1,5	100	160	1	90	20,0	10,0	G 1/8"	M8x15
100-1	60	130	70	4,0	115	225	2	114	44,5	-	G 1/4"	M8x15
200-1	60	125	65	8,0	110	265	3	161	89,0	38,1	G 3/4"	M8x15
330-1	60	140	80	15,0	120	340	3	228	157,5	73,0	G 3/4"	M8x15

*Support load and stroke are interdependent values

**The end plate is equipped with a compressed air port

Pneumatic Spring Bellows

Description

Single-acting small compact and durable pneumatic bellows cylinder of very high quality, providing convincing lifting power.

These bellows are often used as efficient lifting system for our vibration tables for roller-conveyors, or as a highly effective vibration isolator for our big powerful vibration tables

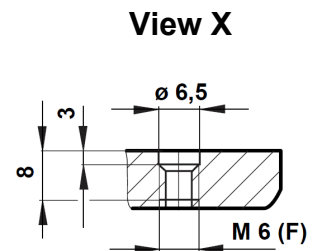
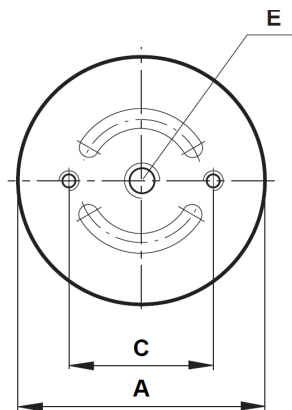
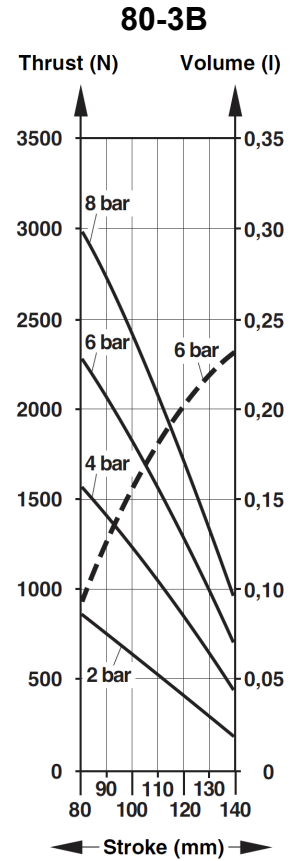
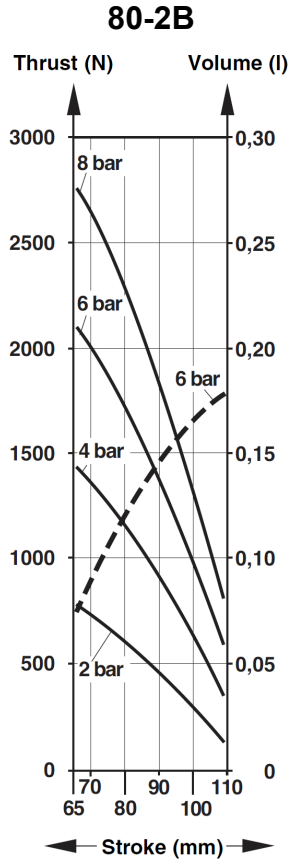
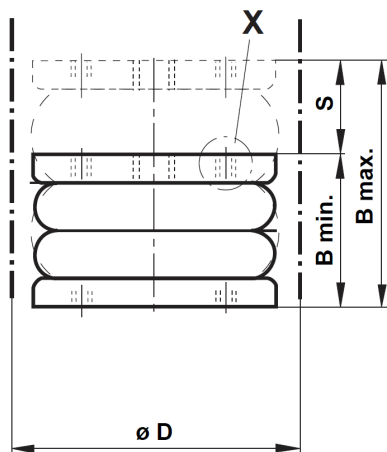
End plate: $\varnothing 2 \frac{3}{4}$ " i aluminium

Rubber bellow: Nylon reinforced SBR /NR / BR-rubber

central ring: Aluminium

Operating Temperature: -40° C til 70° C.

Operating Angel: 5° to 25°



	B min. [mm] at 10 Kg. load	S ved 4 bar [mm]	Load* [mm] at 10 Kg. load	B max. [mm] at 10 Kg. load	$\varnothing D$ [mm]	End Plate**				
						Type	$\varnothing A$	C	E	F
80-2B	80	31	0,5	111	95	2B	78	36	G 1/4"	M6
80-3B	10	50	0,5	150	95	3B	78	36	G 1/4"	M6

*Support load and stroke are interdependent values

**The end plate is equipped with a compressed air port