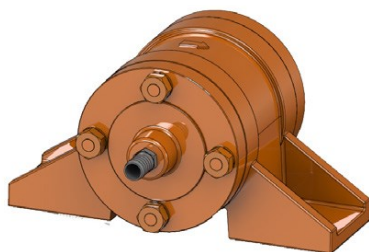




- **Ensure a smooth installation**
- **Better performance**
- **Extended longevity**



NTV 8-1



NTV 12-F

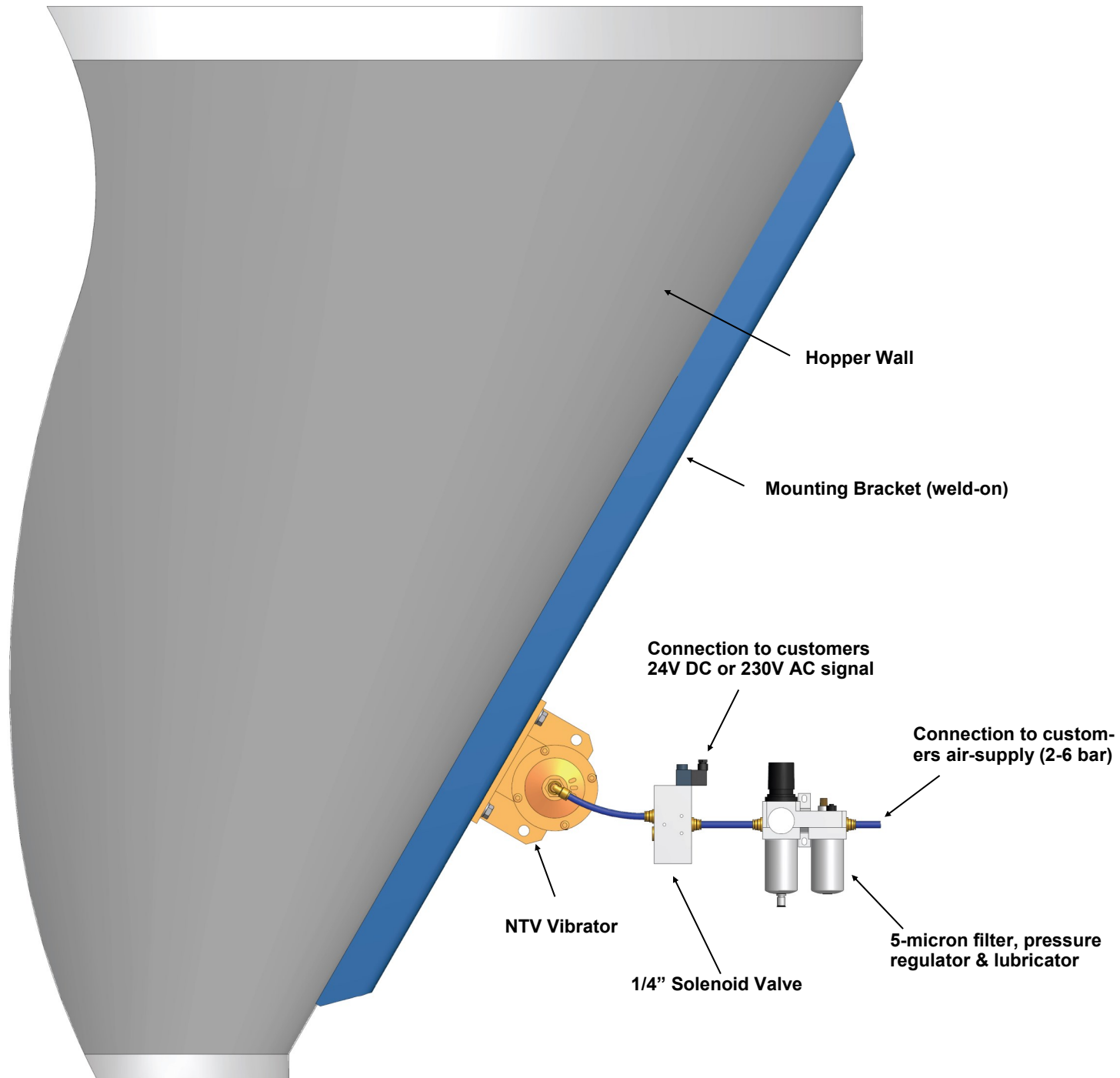


NTV 20-4 with Bracket NVH 4



NTV 30-4Q

NTV Installation Guide



NTV Installation Guide

Mounting Bracket

Ensuring the optimal mounting on the vessel and minimize the risk of fatigue failure.

The bracket can easily be made as a bent or purchased U-profile 6-10mm. in steel and the U-profile is recommended to be fully welded with the "legs" on to the vessels wall and "back" as a mounting surface for NTV vibrator.

There must be drilled 2 or 4 holes for mounting the NTV vibrator.

The vibrator are positioned approx. 1/3 up from the bottom of the vessel of the total length of the height.

Installation

NTV vibrators shall be operated with oil lubricated and filtered compressed air from 2 to 7 bar pressure, and an air volume from 1,000 up to 1,800 normal litres.

It is recommended to use a 1/2" filter-regulator with oil mist lubrication near the NTV vibrators mounting location, this will ensure a good control of vibration frequency and clean compressed air to vibrate.

It is recommended to use a 1/2" 3/2-way solenoid valve for start & stop activation. The solenoid valve can be actuated manually, pneumatically, 24V or 230V electrical signal from the customer's own control.

It is recommended to use of minimum 12mm. compressed air hose

Copenhagen Vibrator Products will always be able to supply all the necessary pneumatic accessories like filter-regulators, lubricators, hoses, fittings and valves.

