

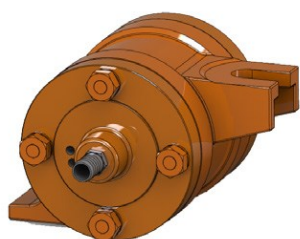


- **Circular Vibration**
- **Frequency 8.500 - 15.000 min⁻¹**
- **Centrifugal Force 7.600 - 53.100 N**
- **Continuously Adjustment of Frequency**
- **No Bearings**
- **Quick and Easy Installation**
- **Reduced Noise Level for NTV Q**

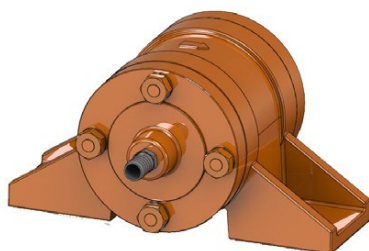
- **These very powerful pneumatic roller vibrators, provide a convincing force of vibration and is commonly used for large and demanding installations in the industry.**
- **With the two mounting options, the vibrators can be fixed permanent installation or rapidly switching with its quick-release bracket.**
- **These roller vibrators, with high frequencies are often used for compaction of cast concrete elements, or for emptying the lorry or construction machinery.**

Technical Specifications

NVT		NTV 8-1	NTV 8-F	NTV 12-1	NTV 12-F	NTV 20-4	NTV 33-4	NTV 34-4	NTV 53-4	NTV 30-4Q	NTV 30-4Q
Frequency	[min ⁻¹]	14.000		15.000		8.500	8.500	13.500	13.000	10.500	10.000
Centrifugal force	[N]	7.630		11.800		20.440	33.980	34.400	53.100	29.700	35.400
Unbalance	[CmKg]	0,71		0,96		5,16	8,58	3,00	4,60	4,90	6,45
Air Consumption	[L/min]	1.600		1.750		1.700	1.700	1.800	1.800	1.600	1.800
Weight with hose	[Kg]	6,6	7,1	7,0	7,5	14,9	16,2	14,9	16,0	19,0	21,0



NTV 8-1



NTV 12-F



NTV 20-4 with Bracket NVH 4



NTV 30-4Q

Pneumatic Vibrator NTV

Application

Pneumatic NTV vibrators is particularly suitable for compaction, conveying and loosening bulk materials.

These are used for compaction of concrete, emptying bins and hoppers, driver of vibration-feeders, for sorting and vibration tables for compaction

The design and power makes them resistant to severe varying loads. These vibrators handle anything!

Design and Working Principle

The circular rotary vibration is created by eccentric rotors.

Frequency and centrifugal force is continuously adjustable by regulating the operating compressed air pressure.

For start & stop activation of the vibrators, it is recommended using a valve preferably a solenoid valve.

Permissible Operating Conditions

Drive medium:

Oiled and filtered compressed air (filter $\leq 5 \mu\text{m}$)

Operating pressure:

1 bar to 6 bar

Ambient temperature:

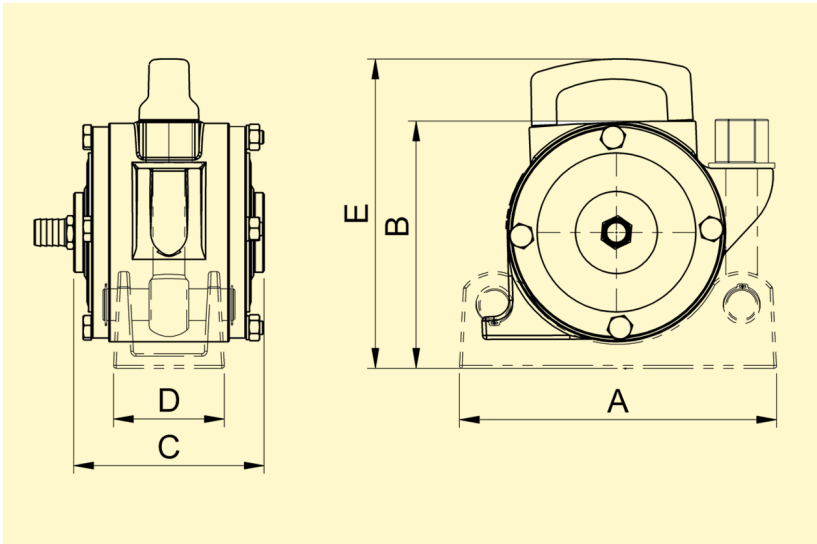
-10°C to $+60^{\circ}\text{C}$

Versions for other temperatures can be supplied on request

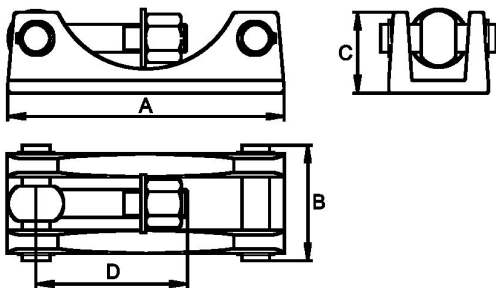
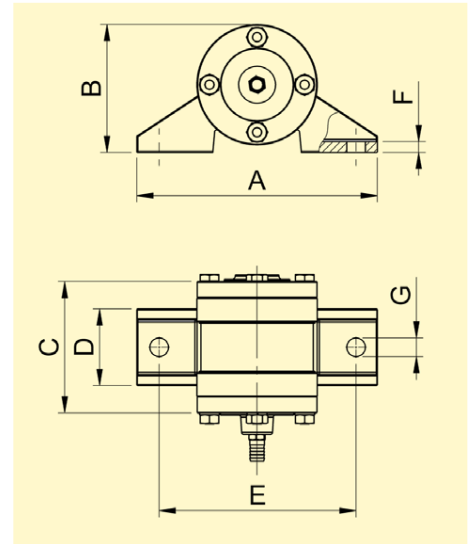
Dimensions

NTV	A [mm]	B [mm]	C [mm]	D [mm]	E [mm]	F [mm]	$\varnothing G$ [mm]
NTV 8-1, NTV 12-1	180	130	145	94	-	-	-
NTV 8-F, NTV 12-F	220	115	145	72	180	10	17
NTV 20-4 to NTV 53-4	240	190	165	90	235	-	-
NTV 30-4Q, NTV 35-4Q	240	190	165	90	235	-	-

NTV 8-1, NTV 12-1, NTV 20-4 to NTV 53-4, NTV 30-4Q, NTV 35-4Q



NTV 8-F and NTV 12-F



Dimensions for NVH Bracket

NVH	A [mm]	B [mm]	C [mm]	D [mm]	Weight [Kg]
NVH 1	180	105	60	100	3,5
NVH 4	240	100	70	140	4,5